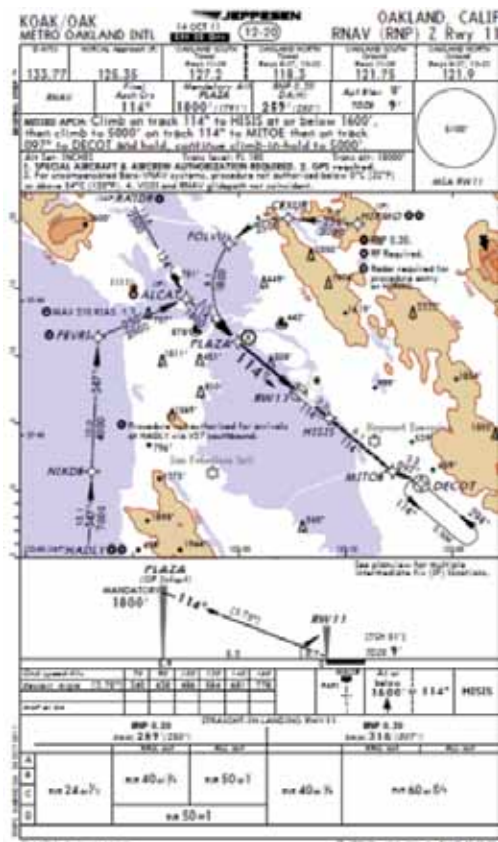


Jeppesen Terminal and Enroute Charts

Worry less, fly more.

Jeppesen terminal and enroute charts provide pilots with a complete solution that includes high quality, accurate and standardized aeronautical charts, procedures and information to efficiently plan and fly anywhere in the world. Whether paper or electronic, Jeppesen charts are designed to reduce workload in the cockpit and provide enhanced situational awareness.



The Briefing Strip™ format was introduced by Jeppesen, with input from pilots, to organize information by phase of flight.

Jeppesen charts are the complete solution for consistent chart design, accuracy with a proven quality process, and multiple delivery and coverage options for pilots who want to worry less and fly more.

In order to reduce time, maximize efficiency and maintain or improve safety standards pilots need a solution that streamlines the flight preparation process, simplifies and organizes workflows, improves flight safety and situational awareness,

and maximizes value in both paper and electronic formats.

Look what Jeppesen charts provide.

These features simplify the flight planning process and improve situational awareness.

Industry leading quality standards process

- Jeppesen's unique set of business rules and quality processes ensure that data is verified at multiple phases during the production process.
- Nearly 80 percent of Jeppesen's staff who create and verify charts have a pilot or dispatcher certification and type rating.
- Chart change notices are provided electronically for the most up-to-date charting information.
- Jeppesen's quality processes are ISO 9000 and FAA DO 200-A certified.

Created from source data and verified for accuracy

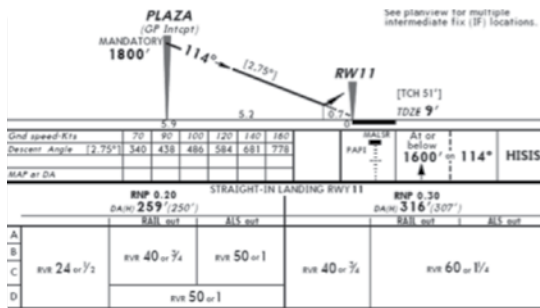
- Jeppesen updates chart data on a 14-day cycle.
- Approximately 1,500 corrections or clarifications conducted per year.
- Jeppesen performs up to 16 different types of calculations to verify data.
- Data is collected from 200 countries; 24 different languages; 260,000 pages of source data and 900,000 NOTAMs per year.
- When data needs clarification, Jeppesen works with source providers to understand and verify the information before including it in a chart.
- Jeppesen performs analysis and calculations on all data prior to incorporating in a chart.
- Jeppesen includes ARINC versions that support the most up-to-date GPS and FMS features and functionality.

RW

248°

Jeppesen Terminal and Enroute Charts

Worry less, fly more.



Descent angles are provided so that you do not have to perform additional calculations during critical phases of flight.

The right information, in the right format, at the right time

- Briefing Strip™ organizes information by phase of flight with descent calculations.
- Jeppesen databases are formatted to deliver data to specific avionics requirements.
- Comprehensive coverage areas that include all procedure types and airport types.
- Variety of coverage areas in various formats including paper, data cards, Internet and mobile devices.

Why you should use Jeppesen charts.

Increased safety margins and improved accuracy.

- Lower the chances of executing procedures incorrectly.
- Accurate information improves decision-making and reduces operational costs.

Increased efficiency and ease of use

- The Jeppesen chart layout flows in a logical sequence so you have easy access to key information during critical phases of flight and reduced workload.
- Having all the charts and information you need to conduct a flight in a single package reduces preparation time, and therefore operational cost.
- Readability of charts reduces planning time and improves in-flight decision making.
- Lower environmental impact from paper delta sets and electronic distribution.
- Electronic delta sets only update the information that has changed for shorter loading times and more flying time.

RW

248°

Jeppesen terminal and enroute charts are available with:

- Airway Manual subscription
- JeppView subscription
- NavSuite subscription
- Mobile TC app
- Mobile FliteDeck app

Learn more about what we offer.

For more information about Jeppesen terminal and enroute charts, visit jeppesen.com.